



X
AminoSensyl™

SC

INCI: Brassica Alcohol (and) Brassicyl Valinate Esylate (and) Brassica Glycerides

Inolex

Formulator's Guide

Contents

AminoSensyl™ SC Benefits	VIEW
How to Formulate	03
pH Levels, Ingredient Compatibility, and Use Level	04
Formulation Examples	05

How to Formulate

AminoSensyl™ SC is designed for efficient use in a one-pot process

While, AminoSensyl™ SC has been optimized for use in one pot method, it is also suitable for traditional two pot methods where it can be melted into to the oil phase.

One Pot Process:

1. Add water phase ingredients into water. Add neutralizing agent. Add AminoSensyl™ SC to hot water at a minimum temperature of 70°C, using medium to high mixing.

NOTE: Recommended neutralizing agents are provided on page 4.

2. Mix using medium to high mixing until completely melted and uniform.

NOTE: The lamellar liquid crystal system will not be clear.

3. Add oil phase ingredients pre-melted or directly into main batch.

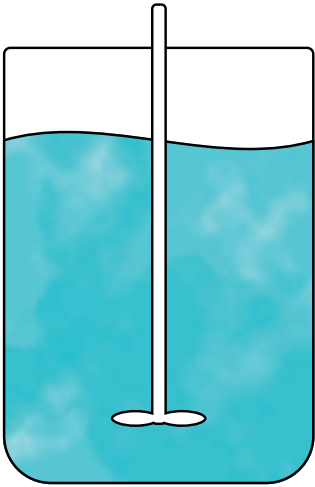
NOTE: Maintain minimum batch temperature of 70°C. Add ingredients steadily as to not cause a sudden drop in temperature. Homogenization is recommended after all oil phase ingredients are added. If homogenization is not possible with your scale-up equipment, high shear mixing can be used.

4. During cool down, reduce mixing speed to low to medium. Add heat sensitive ingredients at this time.

NOTE: At temperatures below 55°C, mixing at high speeds or for excessive lengths of time may cause a loss in viscosity. Mixing with an anchor impeller is recommended.

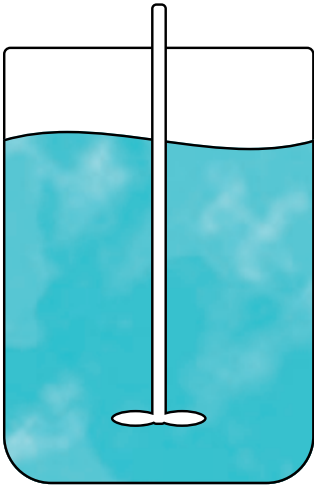
1

Add water phase ingredients into water. Add neutralizing agent. Add AminoSensyl™ SC to hot water at a minimum temperature of 70°C, using medium to high mixing. NOTE: Recommended neutralizing agents are provided on page 4.



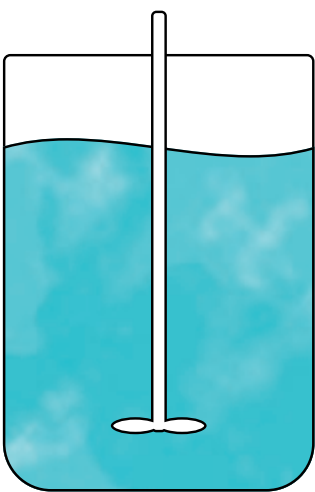
2

Mix using medium to high mixing until completely melted and uniform. NOTE: The lamellar liquid crystal system will not be clear



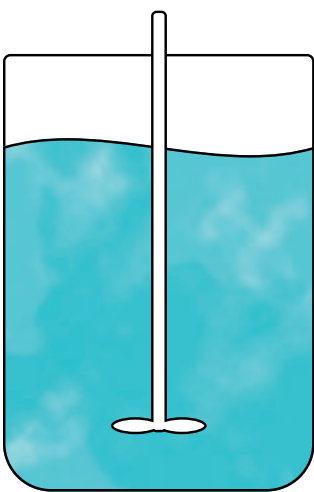
3

Add oil phase ingredients pre-melted or directly into main batch. NOTE: Maintain batch temperature of 70°C. Homogenization is recommended.



4

During cool down, reduce mixing speed to low to medium. Add heat sensitive ingredients at this time. NOTE: At temperatures below 55°C, mixing at high speeds or for excessive lengths of time may cause a loss in viscosity. Mixing with an anchor impeller is recommended.



pH Requirement

- Calcium gluconate or sodium gluconate are recommended neutralizing agents.
- The recommended ratio of AminoSensyl™ SC to calcium gluconate is 7:1. Exact level of calcium gluconate required is formulation dependent.
- Strong bases are not recommended for pH adjustment (e.g. sodium hydroxide).
- AminoSensyl™ SC performance is optimal at pH < 5.0

Use Level

- Use 6-9% AminoSensyl™ SC for oil loading up to 20%
- Use 10-12% AminoSensyl™ SC for oil loading up to 40%

Ingredient Compatibility

- Brassicyl valinate esylate provides a cationic charge at pH < 5.0
- AminoSensyl™ SC is generally not compatible with anionic components such as anionic emulsifiers, co-emulsifiers, polymers, etc.
- AminoSensyl™ SC is HLB independent. Additional emulsifiers are typically not required to form a stable emulsion.
- Viscosity increasing polymers should not be necessary. Anionic viscosity increasing polymers are not recommended (e.g. xanthan gum, carbomer, etc.).
- If rheology modification is necessary, cationic polymers or additional fatty alcohol (e.g. brassica alcohol) can be added to increase viscosity.

Formulation Examples



Smooth Shave Lotion (BB-1071)

This silky lotion conditions and preps the skin for a comfortable and close shave. It is gentle on sensitive skin and delivers slip and easy glide for the ideal shaving experience. The skin is left moisturized and soft, eliminating the need for an after-shave product.

[SEE THE FORMULATION](#)



Ultra Moisture Body Lotion (BB-1072)

A therapeutic body lotion to nourish dry, cracked skin and provide a strong moisture barrier for protection against further drying. The rich texture blankets the skin leaving it soft to the touch.

[SEE THE FORMULATION](#)



Deep Hydration Day + Night Cream (SC-1085)

A versatile, deeply hydrating cream to reinvigorate dry, dull skin. The emulsification power coupled with the novel quat-free cationic structure of AminoSensyl™ SC allows for a high oil load with a soft, powdery afterfeel. This is a self-emulsifying formulation with 25% oil loading.

[SEE THE FORMULATION](#)

Inolex and its marketing subsidiaries, affiliates, partners and suppliers, disclaim responsibility for results of use of the Materials or of any product, method, or apparatus mentioned herein. Nothing stated herein is to be considered a recommendation or inducement of any use, manufacture or sale that may infringe any patents or any other proprietary rights now or hereafter in existence. The Materials are intended to act as a guide for use at your discretion and risk. We assume no liability in connection with the use, or the utilization of the Materials or the methods or products described therein. Information pertaining to availability, pricing and technical assistance for these products can be obtained from the marketing department, through the nearest sales representative or authorized distributor. Articles found in this document may be patented. Inolex patent numbers and the associated patented articles can be found at www.Inolex.com/patents. ©2022 Inolex, Inc. All rights reserved.

Inolex